



redPOWER cube

300W - 500W air cooled

Power and control for Additive manufacturing, Micro-machining, Fine cutting and Welding.
CW / Modulated Fiber Laser.



Key benefits and features

This versatile Fiber Laser range, covering 300W and 500W offers a number of industry leading features in a standard 19" rack format, with integrated power supply making it simple to install into new or existing products.

Full feature list

- 300W to 500W CW output power.
- Fully air cooled laser and beam delivery fiber.
- Single mode and multi mode fiber beam delivery options.
- Patented back reflection protection.
- FiberView™ software.
- Integral rapid modulation & pulse shaping.
- Small footprint.
- High reliability.
- Low maintenance.

Optimised for...

Easy integration into our customers' equipment where the added complexity of providing water cooling is undesirable; these industrial Lasers come complete with their own internal control system.

These versatile Lasers offer a number of benefits including output power flexibility and a range of beam delivery, control and interface options.



Welding
304 Stainless Steel



Flat Sheet Cutting
Stainless Steel



3D Printing / Additive Manufacturing
Metal Powders

Benefits

- Back reflection protection
- Lower energy bills
- High reliability
- Small footprint
- 19" Rack mount format
- Low maintenance

Key features

- 300W & 500W
- BPP of 0.38 - 4.5mm.mrad
- Single mode and multimode fiber delivery options
- Up to 50kHz Modulation rate

Applications

- Cutting
- Welding
- Fine Cutting
- Additive Manufacturing
- Cladding

Industries

- Additive Manufacturing
- Automotive
- Electronics
- General Assembly
- Industrial

Product Selection Parameters

Model	300W	500W
Performance Data		
Operating Modes	CW and Modulated	
Output Power Range	10 – 105%	
Long Term Output Power Stability ⁽¹⁾	± 2% peak	
Wavelength (nm)	1080	
Linewidth (nm)	<10	
Polarisation	Un-polarised	
Min. Rise / Fall Time (µs)	<5 / <6	
Max. Modulation Frequency (kHz)	50	
Fiber Optic Beam Delivery		
20µm Fiber	M ² 1.1 ± 0.1	
50µm Fiber	2.1mm mrad BPP ⁽²⁾	
100µm Fiber	Enhanced 3.3mm mrad BPP ⁽²⁾	
100µm Fiber	4.5mm mrad BPP ⁽²⁾	
Alignment Laser Wavelength (nm)	630-680 (Class 2)	
Electrical		
Voltage (nominal)	100-240V	
Current Range (A)	3-8	5-12
Environment		
Ambient Temperature (°C)	5-40	
Humidity	5-85% RH, 35°C Max. Dew Point	
Module Dimensions		
Height	5U (221mm)	
Width	19" rack mount (445mm)	
Depth	621mm	

Notes

- 1. Constant Temperature
- 2. Beam Parameter Product = beam radius x half angle divergence

Terms and conditions

Some specific combinations of product specifications and optional accessory may not be available. These Lasers are designed as units for incorporation or integration into other equipment. All product information is believed to be accurate and subject to change without notice. A complete product specification will be issued on request and also at time of order acknowledgement. The user assumes all risks and liability whatsoever in connection with the use of the product or its application.

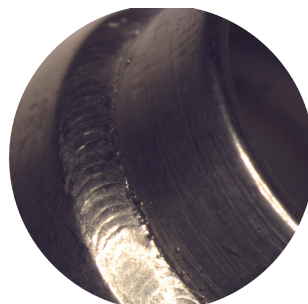
Applications



3D Printing / Additive Manufacturing
Metal Powders



Cutting
Aluminium, Mild Steel,
Copper, Brass &
Stainless Steel



Welding
304 Stainless Steel



Cutting
Mild Steel

